

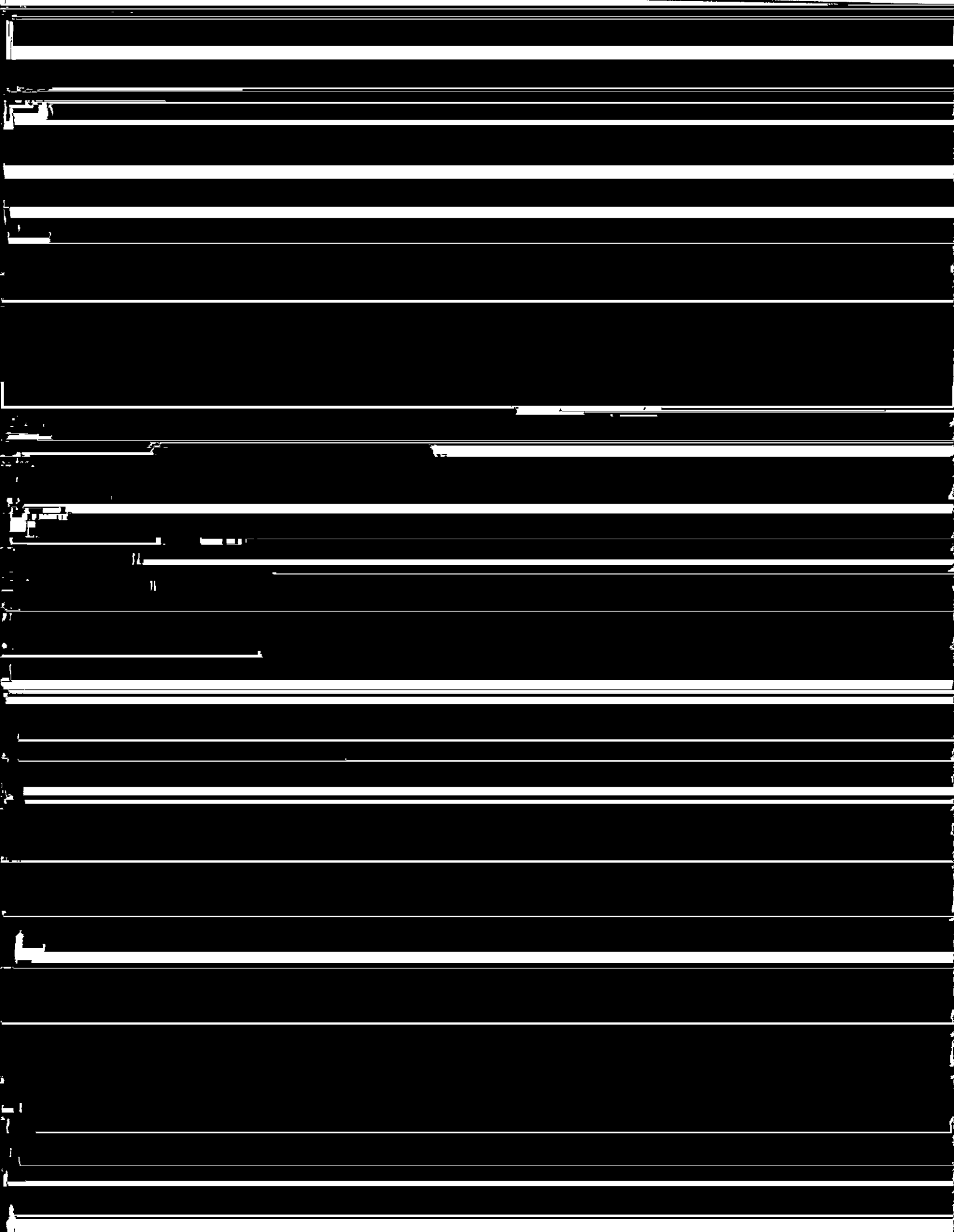
PUBLIC VERSION

UNITED STATES OF AMERICA  
BEFORE FEDERAL TRADE COMMISSION



[REDACTED]

The Commission's Complaint had charged that the acquisitions of UAI and CSAR lessened competition in a "market" for advanced versions of Nastran, a type of computer aided engineering ("CAE") software. [REDACTED]



PUBLIC VERSION

MSC

1623

captured approximately 17% of the 2000 CAE market). PLM's current revenue is generated approximately in the following customer segments: 15% aerospace, 35% automotive, 30% consumer and 20% others.

SDRC comes to EDS with a very strong background in the CAE market.

Originally a consulting organization to assist companies in machine tool chatter analysis, SDRC grew into a market leader by commercializing its Supertab product – now known as I-DEAS.

Through the years, SDRC has pioneered many advanced meshing technologies, geometry

abstractions, solver technologies, finite element analysis, and simulation.



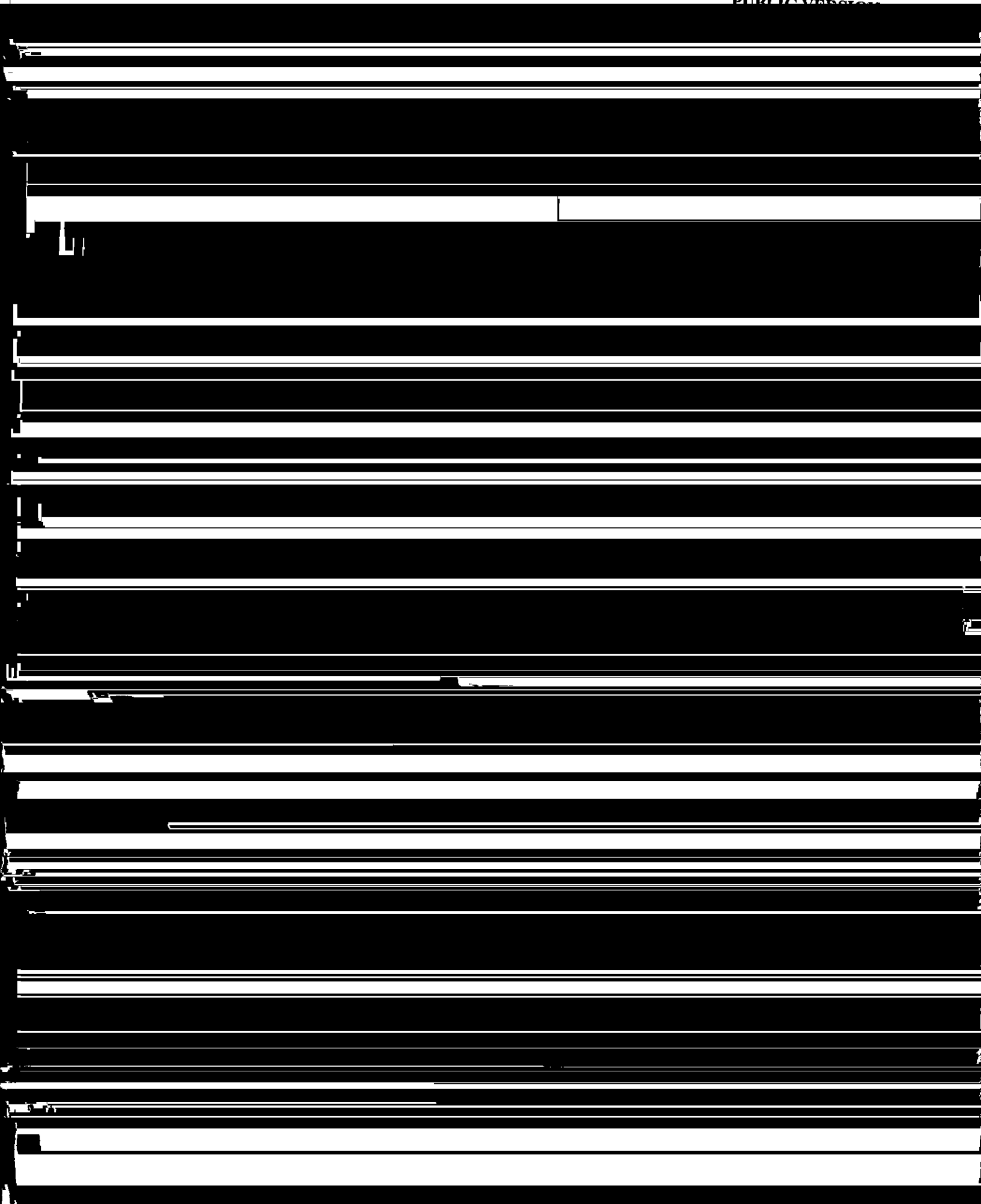
global support, distribution and sales organizations to compete in the European, Asian and Americas regions.

EDS PLM Solutions has operations worldwide, with very large operations in the UK, France, Germany, Sweden and Italy in Europe. In Asia, the largest operation is in Japan, with very large operations in China, Taiwan, Korea, and additional offices throughout the ASEAN region. In the Americas, EDS PLM Solutions has offices throughout the United States, Canada and South America.

In addition to direct sales and technical support in these regions, EDS is also aligned with resellers to sell and support their products. In Japan, a significant portion of the

EDS revenue is driven through its distribution partners. In Europe, many of its smaller accounts are served by distributors, particularly in Eastern Europe and parts of Scandinavia. United States

customers are largely



LI

7