

EXHIBIT 3

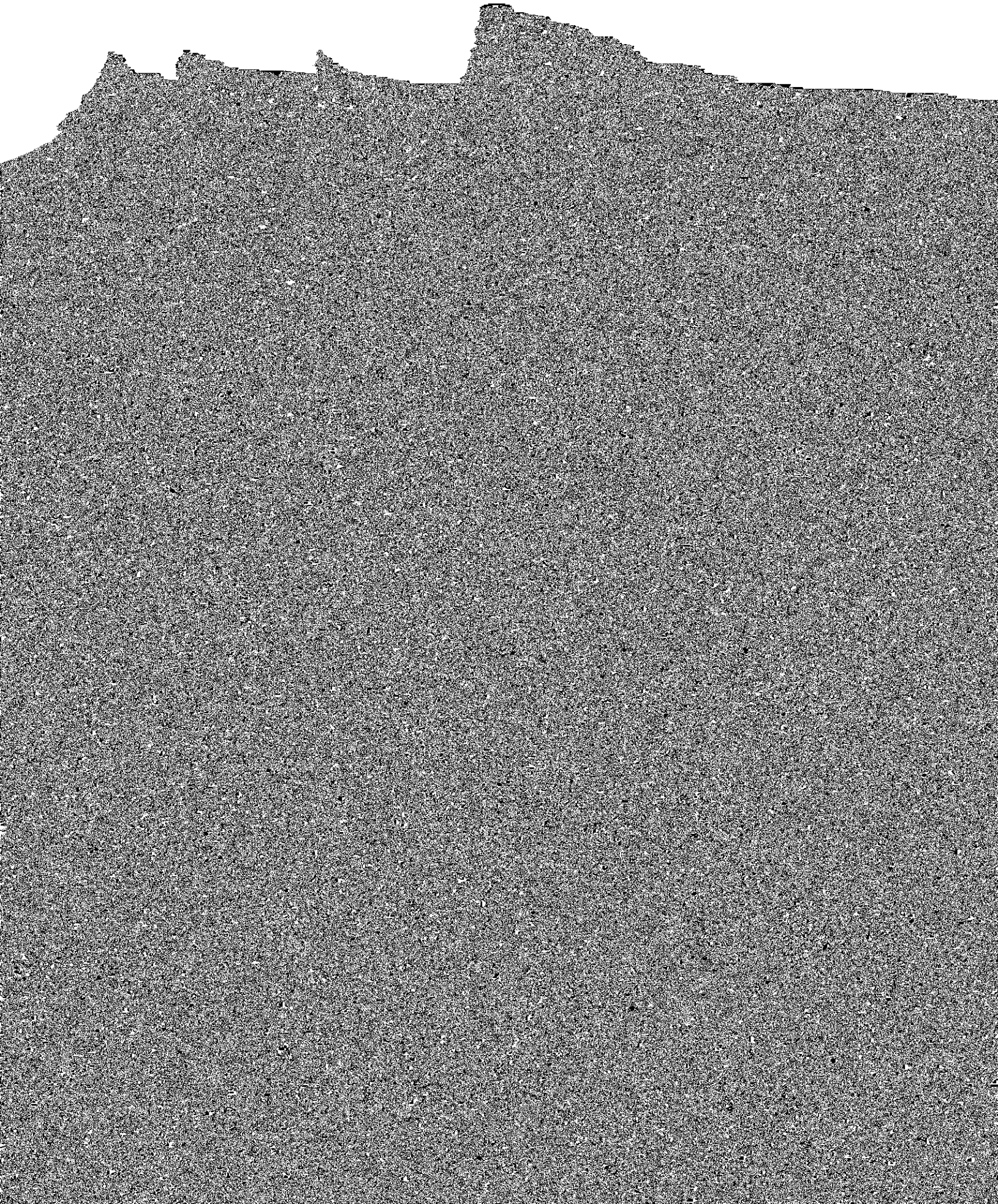
General Information

1. Identify the complete legal name of Hannaford and all other names under which it has done or does business, its corporate mailing address, and the date and state of

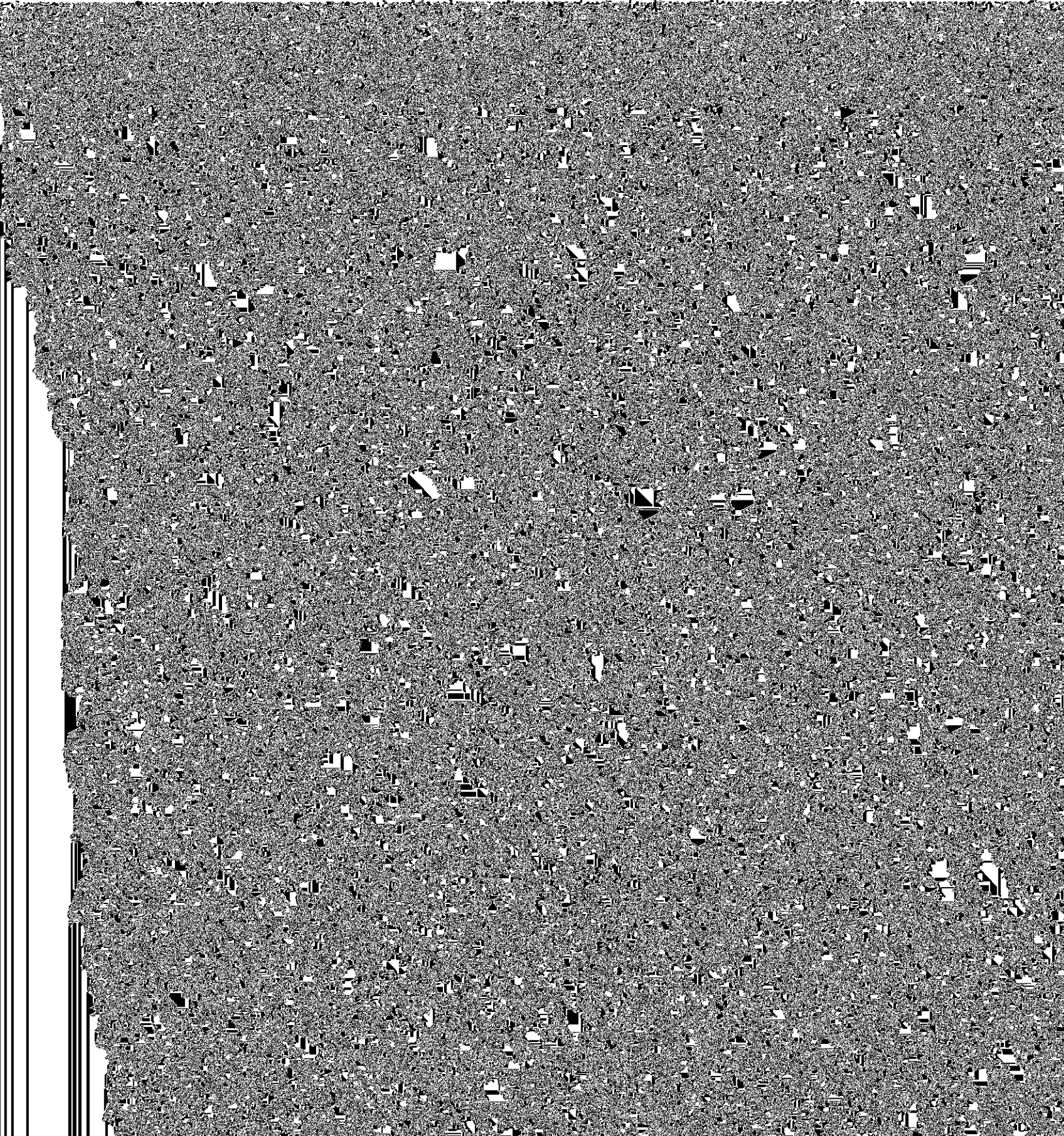
measures; records of the configuration of applications, programs, and network components used in card authorization (such as whether an application was

Customer.shtml. Provide:

- (a) documents sufficient to identify, and describe in detail: all networks located outside of the United States used by Hannaford to store and process personal information; the physical location(s) of each network



flow path for pharmacy information between and within computer networks used or operated by or for Hannaford, and identify each portion of the transmission or flow path where pharmacy information was





UNITED STATES OF AMERICA
FEDERAL TRADE COMMISSION

